

# Earth's Bounty Placemats

by CHRISTINE STAINBROOK



Make a set of four placemats to match the *Earth's Bounty* table runner, which appears in the December 2010/January 2011 issue of *The Quilter*.

**Skill level:** Beginner

**Block size sewn into placemat:** 6" x 6"

**Number of blocks in each placemat:**

4 (2 Block A, 2 Block B)

**Finished placemat size:** 15" x 19"

## MATERIALS

**Note:** Yardage is based on 42" wide useable fabric from *Northcott's Earth Blessing* collection designed by Jody Houghton.

*For four placemats:*

- 1/8 yd. each of green check and blue check (Nos. 6756-71 and 6756-43)
- 1/4 yd. of green dot (No. 6755-71)
- 1/4 yd. of leaf print (No. 6764-74)
- 1/4 yd. of white floral (No. 6762-41)
- 1/3 yd. of blue dot (No. 6755-43)
- 1/2 yd. of white tonal
- 1 1/8 yds. of red dot (No. 6755-24, includes binding)
- Four 20" x 24" pieces of backing fabric
- Four 20" x 24" pieces of batting
- Thread in colors to match fabrics
- Rotary cutter, ruler, and mat
- Basic sewing supplies



## CUTTING DIRECTIONS

**Note:** Cut all strips horizontally from selvage to selvage.

*From each of the green check and blue check fabrics, cut:*

Two 1 1/2" x 42" strips; recut into thirty-two 1 1/2" x 2 1/2" pieces (for Blocks A and B, respectively)

*From the green dot fabric, cut:*

Three 1 1/2" x 42" strips; recut into sixty-four 1 1/2" squares (for Block A)

*From the leaf print fabric, cut:*

Two 2 7/8" x 42" strips; recut into sixteen 2 7/8" squares (for Block A) and eight 2 1/2" squares (for Block B centers)

*From the white floral fabric, cut:*

Two 2 7/8" x 42" strips; recut into sixteen 2 7/8" squares (for Block B) and eight 2 1/2" squares (for Block A centers)

*From the blue dot fabric, cut:*

Two 2 1/2" x 42" strips; recut into four 2 1/2" x 12 1/2" pieces (for sashing) and eight 1 1/2" squares (for Block B)

Two 1 1/2" x 42" strips; recut into fifty-six 1 1/2" squares (for Block B)

*From the white tonal fabric, cut:*

Three 2 7/8" x 42" strips; recut into thirty-two 2 7/8" squares (for Blocks A and B)

Four 1 1/2" x 42" strips; recut into sixty-four 1 1/2" x 2 1/2" pieces (for Blocks A and B)

*From the red dot fabric, cut:*

Eight 2 1/2" x 42" strips (for binding)

Ten 1 3/4" x 42" strips; recut into eight 1 3/4" x 19 1/2" pieces and sixteen 1 3/4" x 12 1/2" pieces (for sashing and border)

## DIRECTIONS

**Note:** Use a 1/4" seam allowance throughout. Sew all pieces with right sides together and raw edges even, using matching thread. Press seams toward the darker fabric after adding each piece or as indicated.

### Block A Assembly

**1. Corner units.** Draw a diagonal line on the wrong side of each of two 2 7/8" white tonal squares. Following **Diagram 1**, place each marked square right sides together with a 2 7/8" leaf print square. Sew 1/4" away from each side of the drawn lines. Cut apart on the lines and trim even to yield four 2 1/2" x 2 1/2" half-square triangle units.

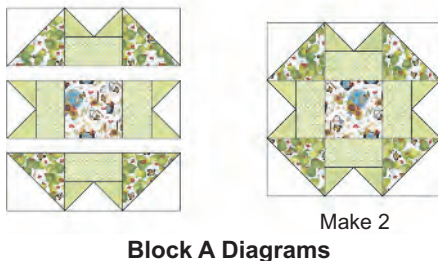


2. *Side units.* Draw a diagonal line on the wrong side of each of two 1½" green dot squares. Noting orientation of the drawn lines, place a marked square right sides together on each end of a 1½" x 2½" white tonal piece as shown in **Diagram 2**. Stitch on the drawn lines and trim seam allowance to ¼". Make a total of four units. Following **Diagram 3** and noting orientation, sew a 1½" x 2½" green check piece to the bottom of each unit. Press seams toward the check pieces.



3. Referring to the **Block A Diagrams** and noting orientation, stitch the side units and corner units together with a 2½" white floral square into three horizontal rows. Sew the rows together, matching all seams, to complete one 6½" x 6½" block.

4. Repeat steps 1 through 3 to make a second block.



### Block B Assembly

1. *Corner units.* Using 2⅞" white floral squares instead of leaf print squares, follow step 1 of the Block A Assembly and **Diagram 4** to make a total of four 2½" x 2½" half-square triangle units.

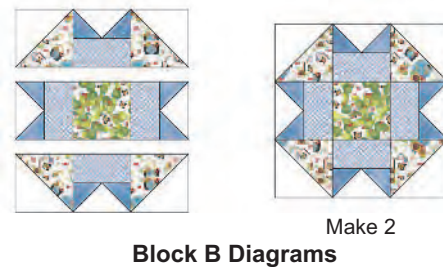


2. *Side units.* Using 1½" blue dot squares instead of green dot squares, refer to step 2 of the Block A Assembly and **Diagram 5** to make a total of four units. Following **Diagram 6** and noting orientation, sew a 1½" x 2½" blue check piece to the bottom of each unit. Press seams toward the check pieces.



3. Referring to the **Block B Diagrams** and noting orientation, stitch the side units and corner units together with a 2½" leaf print square into three horizontal rows. Press seams toward the corner units in rows 1 and 3 and toward the center square in row 2. Sew the rows together, matching all seams, to complete one 6½" x 6½" block.

4. Repeat steps 1 through 3 to make a second block.

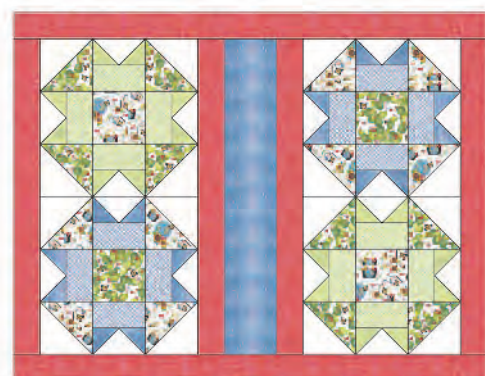
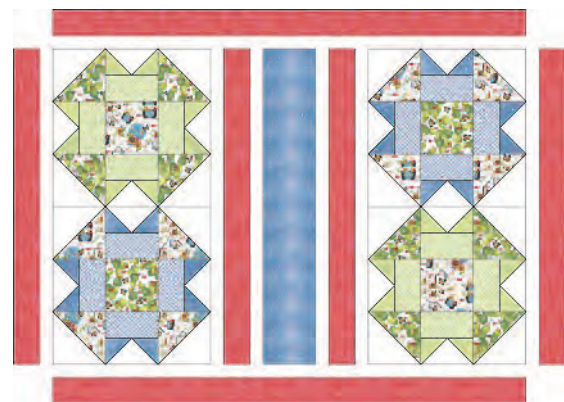


### Placemat Assembly and Finishing

**Note:** Press seams toward the border and sashing strips.

1. *Block rows.* Sew Blocks A and B together in pairs to make two vertical rows.

2. *Sashing and border.* Referring to the **Placemat Layout Diagrams**, stitch a 1¾" x 12½" red dot strip to each



Placemat Layout Diagrams

long side of each block row. Sew a 2½" x 12½" blue dot strip between the bordered block rows. Stitch a 1¾" x 19½" red dot strip to each long side of the placemat top. The top should measure 15" x 19½".

3. Layer the placemat top right side up on top of a piece of batting and the wrong side of the backing. Baste the layers together and quilt in the ditch or as desired. Trim the backing and batting even with the placemat top.

4. Sew the eight 2½" x 42" red dot strips short ends together to make one long strip. Press seams open. Cut four 80" lengths. Press each strip lengthwise in half with wrong sides together. With raw edges aligned and leaving a 4" tail, stitch a strip to one placemat top through all layers, mitering the corners. Stop approximately 4" from the start-

ing point. Place both loose ends of the binding flat along the placemat edge. Where the ends meet, fold them back on themselves and press to form a crease. Using this crease as your stitching line, sew the two open ends of the binding with right sides together. Trim seam to ¼" and press open. Finish stitching the binding to the placemat top. Turn the binding to the back of the placemat and blindstitch in place.

5. Repeat steps 1 through 4 to make three more placemats.

Christine Stainbrook is a professional quilt designer from Redford, Michigan. For free patterns and to see more fabrics by Northcott, visit [www.northcott.com](http://www.northcott.com). ❖